



Unnamed Hamlet PS
French Immersion Program
Boundary Meeting

Wednesday November 26th, 2008
7pm to 8pm



Unnamed Hamlet PS Boundary Meeting

AGENDA

1. Introductions
2. School Facts
3. Board Boundary Procedure
4. Proposed Boundary and Enrolment Projections
5. Before/After School Daycare
6. Resources – New and Existing
7. Questions



Unnamed Hamlet PS Boundary Meeting

School Facts:

- Opens September 2009
- Dual track English and French Immersion
- JK to Grade 8, 2-storey elementary school
- Ministry capacity of 558 pupils
- **27 classrooms** (includes 4 Kindergarten rooms, Science, Art and Music rooms)



Unnamed Hamlet PS Boundary Meeting

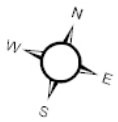
- Students proposed to attend the new school in the French Immersion program currently attend Cadarackque PS
- Students proposed to attend the new school in the English program currently attend Valley View PS and Dr. Roberta Bondar PS
- Will open JK to grade 7, so the pupils in grade 8 can graduate from their current school, then move the following year into secondary school
- Any students, other than the grade 8 pupils, wishing to remain at the holding schools can apply as an “Out of Area” pupil, on an annual basis, without transportation



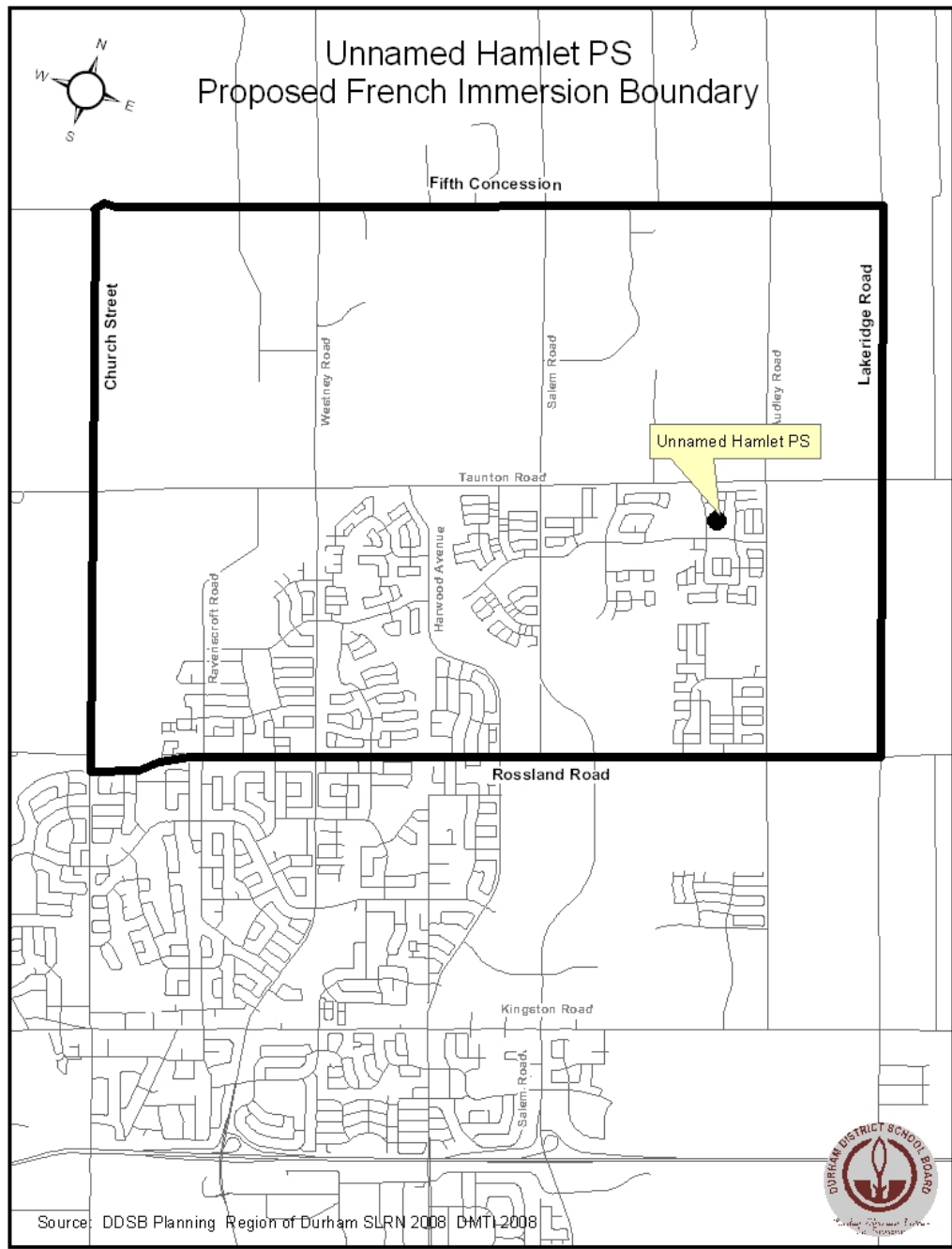
Unnamed Hamlet PS Boundary Meeting

Board Procedure #3313: School Boundaries

- outlines the criteria for school boundaries:
 - Community or neighbourhood boundaries
 - Maximizing the walking population
 - Accommodating both peak and mature population
 - Local restricting parameters;
 - Major roads, rivers, rail lines, hydro corridors, incompatible land uses



Unnamed Hamlet PS Proposed French Immersion Boundary



Source: DDSB Planning Region of Durham SLRN 2008 DMT1-2008





Unnamed Hamlet PS Boundary Meeting

■ New School Projections

- Unnamed Hamlet PS – 558 capacity

<u>Year</u>	<u>Total Enrolment</u>	<u>French Immersion</u>
2009	475 pupils (414 FTE)	163
2010	601 pupils (539 FTE)	203
2011	691 pupils (627 FTE)	238
2012	787 pupils (724 FTE)	274



Unnamed Hamlet PS Boundary Meeting

■ Existing School Projections

- Cadarackque PS – 541 capacity

<u>Year</u>	<u>Enrolment</u>
2008	728 pupils (699 FTE)
2009	629 pupils (604 FTE)
2010	646 pupils (621 FTE)
2011	672 pupils (647 FTE)
2012	685 pupils (660 FTE)



Unnamed Hamlet PS Boundary Meeting

■ Before/After School Care

- Schoolhouse Playcare is the daycare provider for the Durham District School Board
- A full-time daycare facility will not be part of the school facility
- If a request is made, Schoolhouse Playcare will survey the parents of the school once the school is operational, to determine if there is sufficient interest in operating a Before/After school care school program



Unnamed Hamlet PS Boundary Meeting

■ New Resources

- All new schools receive a budget for resources
- Budget factored in on number of full time equivalent pupils

■ Existing Resources

- The 2 administrators in agreement, share a percentage of the existing resources in alignment to the percentage of pupils that will going to the new school



Unnamed Hamlet PS Boundary Meeting

■ Questions?